

RESOLUTION NO. 03-79

**RESOLUTION CREATING RURAL SPECIAL IMPROVEMENT MAINTENANCE
DISTRICT TO BE KNOWN AS R.S.I.D. #703M
BEARTOOTH POINTE ESTATES SUBDIVISION**

WHEREAS, the Board of County Commissioners of Yellowstone County, Montana, met in regular session and executed a Resolution of Intent to Create a Rural Special Improvement Maintenance District #703M for Beartooth Pointe Estates Subdivision, as described in Exhibit A and more particularly shown in Exhibit B (map) and,

WHEREAS, the Clerk and Recorder published the Notice of the passage of Resolution of Intent to Create the District in the Billings Gazette on June 13th and June 20th, 2003, and mailed a copy of the Notice to every person, firm or corporation owning property in the District; and,

WHEREAS, the Board of County Commissioners finds, determines and declares that:

1. The public interest or convenience requires the creation of a Rural Special Improvement Maintenance District as hereinafter described;
2. The costs of providing maintenance shall be borne by owners of the property included within the boundaries of the Rural Special Improvement Maintenance District with all existing and future lots being assessed an equal amount on a per lot basis;
3. The purpose of forming the District is to provide the maintenance, preservation, and repair of the streets or stormwater drainage located within the boundaries of this District;
4. The Commissioners have been presented with a valid Petition to create the proposed District;

NOW, THEREFORE, BE IT RESOLVED by the Board of County Commissioners of Yellowstone County as follows:

1. The Commissioners have acquired jurisdiction to create a Rural Special Maintenance District No. 703M to provide for the annual maintenance, preservation and repair of the streets or stormwater drainage. The costs are more particularly described in Exhibit D. The estimated costs shown do not preclude other eligible street maintenance and stormwater drainage expenditures.
2. All of the costs of the District shall be assessed equally on a per lot basis for all existing and future lots. (See Exhibit C.) The boundaries of this District are shown on the map attached as Exhibit B and described in Exhibit A.
3. The number of the Rural Special Maintenance District thereof shall be No. 703M.

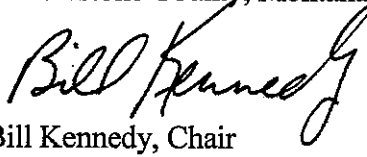
Page 2
Resolution Creating
R.S.I.D.# 703M

4. All lots accessing their property from the streets will benefit from proposed R.S.I.D. and shall be assessed for road and stormwater drainage maintenance. All lots will be assessed an equal amount based upon the total cost of the maintenance.

PASSED AND ADOPTED by the Board of County Commissioners of Yellowstone County, Montana, this 24th day of June, 2003.

Board of County Commissioners
Yellowstone County, Montana


(SEAL)



Bill Kennedy, Chair



Jim Reno, Sr., Member



John Ostlund, Member

ATTEST:



Tony Nave
Clerk and Recorder

EXHIBIT A

RESOLUTION OF INTENTION TO CREATE R.S.I.D. #703M (BEARTOOTH POINTE ESTATES SUBDIVISION)

LEGAL DESCRIPTIONS

Lots 1, 2 Block 1;

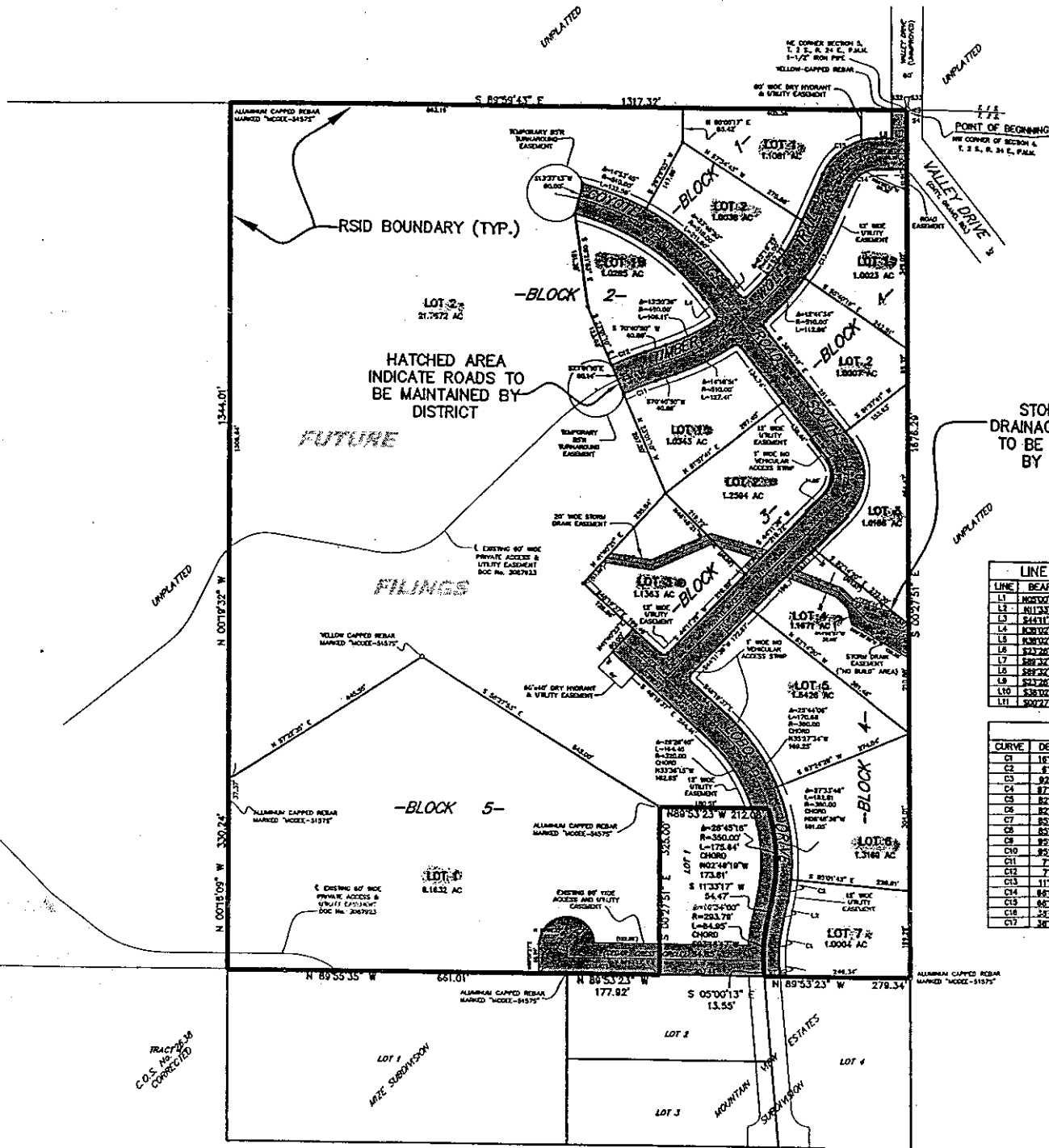
Lots 1, 2 Block 2

Lots 1, 2, 3 Block 3

Lots 1, 2, 3, 4, 5, 6, 7 Block 4

Lot 1 Block 5

**RESOLUTION OF INTENT TO CREATE RSID 703M-BEARTOOTH MOUNTAIN ESTATES SUBDIVISION
EXHIBIT B: MAP**



LINE TABLE		
LINE	BEARING	LENGTH
L1	N02°07'43"W	14.23
L2	N01°33'17"E	54.47
L3	S41°11'30"W	105.12
L4	S30°02'19"W	38.18
L5	S30°02'19"W	38.18
L6	S21°26'19"W	88.28
L7	S08°34'09"W	58.18
L8	S08°34'09"W	28.60
L9	S21°26'19"W	88.07
L10	S38°10'17"E	21.28
L11	S02°27'31"E	83.14

STORM EASEMENT TABLE	
LINE	BEARING
L12	N72°56'44"E
L13	N65°06'21"E
L14	N65°06'21"E
L15	N72°56'44"E
L16	S82°04'48"E
L17	S82°04'48"E

CURVE TABLE				
CURVE	DELTA	LENGTH	RADIUS	CHORD B
C1	162°40'00"	78.27	263.79	S03°01'17"E
C2	67°24'38"	43.68	300.00	N08°16'48"E
C3	67°31'18"	18.18	10.00	S02°13'38"E
C4	87°28'42"	15.27	10.00	N07°38'06"E
C5	82°13'58"	156.18	110.20	N03°04'06"E
C6	82°13'58"	72.00	50.20	N03°04'06"E
C7	82°36'18"	14.94	10.00	N00°04'28"E
C8	82°36'18"	14.94	10.00	S04°52'20"E
C9	82°14'27"	16.82	10.00	S00°28'28"E
C10	82°12'27"	18.62	10.00	N05°24'38"E
C11	72°04'47"	65.81	480.00	S08°54'22"E
C12	72°13'17"	68.77	540.00	S08°28'22"E
C13	112°23'08"	101.54	310.00	N28°08'28"E
C14	86°03'07"	63.41	54.58	S08°10'28"E
C15	86°24'04"	132.80	114.58	S04°30'08"E
C16	24°52'08"	344.19	510.00	N57°22'22"E
C17	24°47'43"	304.04	450.00	N57°22'22"E

NOTE: ROADS WITHIN THE SUBDIVISION ARE PUBLIC ACCESS ROADWAYS, BUT ARE NOT MAINTAINED BY THE COUNTY.

PETITION TO ESTABLISH A RURAL SPECIAL IMPROVEMENT DISTRICT (RSID)

SECTION C
ESTIMATED ANNUAL MAINTENANCE COST

FALL MAINTENANCE:

ACTIVITY	ESTIMATED COST
Road Blading	\$ 450.00
Snow Plowing/Ice Control	\$ 200.00

WINTER MAINTENANCE:

ACTIVITY	ESTIMATED COST
Road Blading	\$ 450.00
Snow Plowing/Ice Control	\$ 400.00

SPRING MAINTENANCE:

ACTIVITY	ESTIMATED COST
Road Blading	\$ 450.00
Snow Plowing/Ice Control	\$ 200.00

SUMMER MAINTENANCE:

ACTIVITY	ESTIMATED COST
Road Blading	\$ 450.00
Weed Control	\$ 250.00

TOTAL ESTIMATED ANNUAL MAINTENANCE COST: \$ 2,850.00